

PG820

Reservdelar

Spare parts

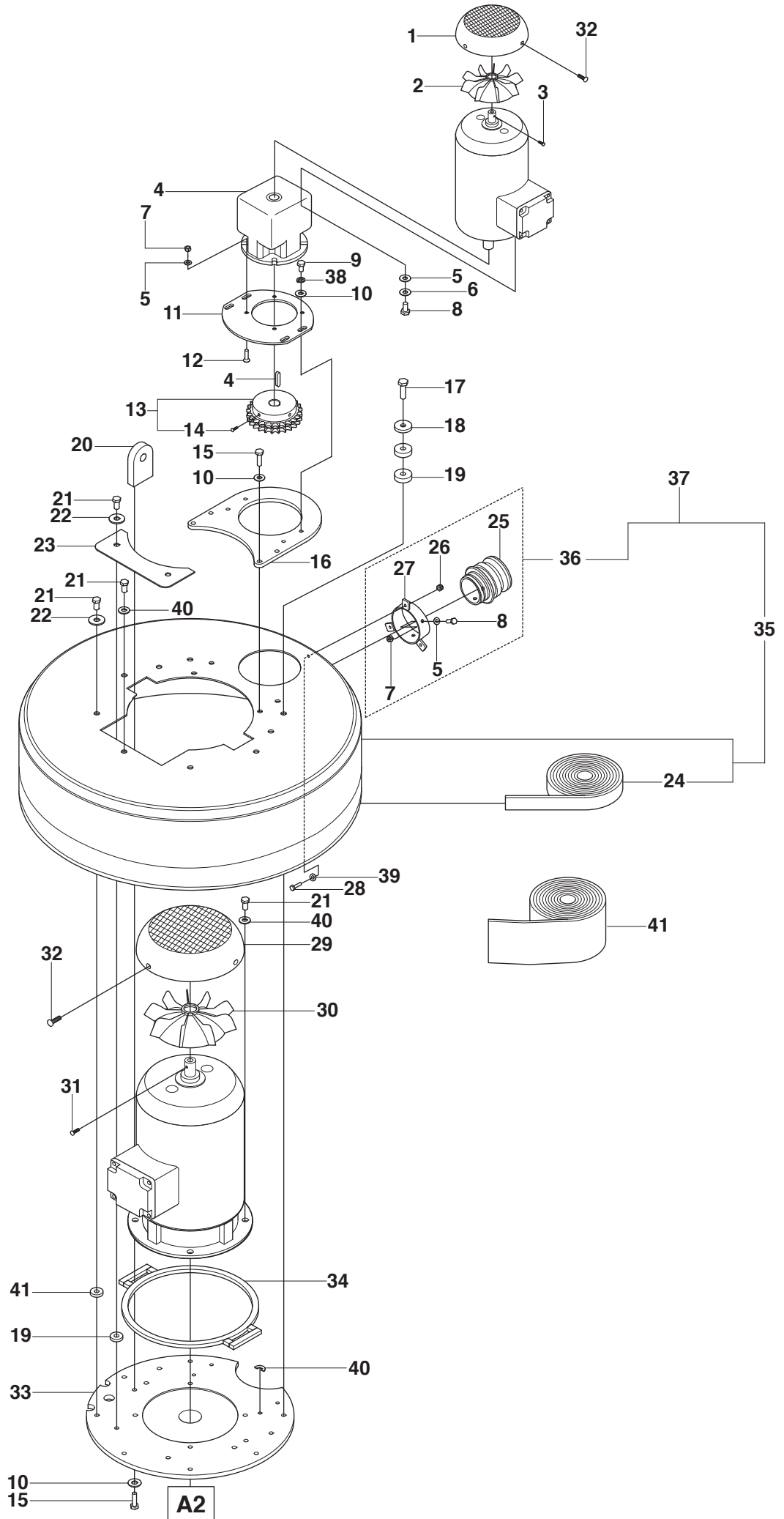
Ersatzteile

Pieces de rechange

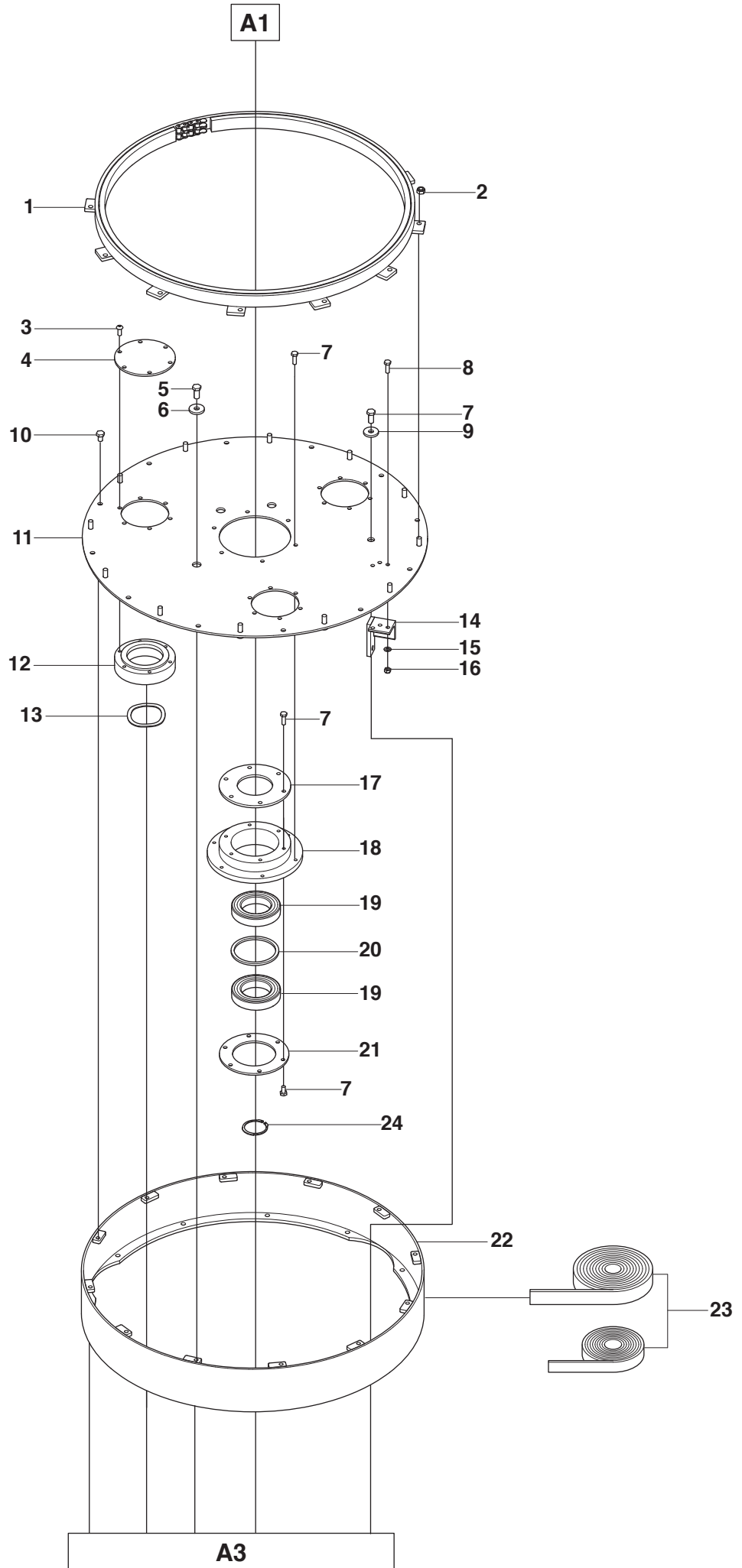
Piezas de repuesto

Ricambi

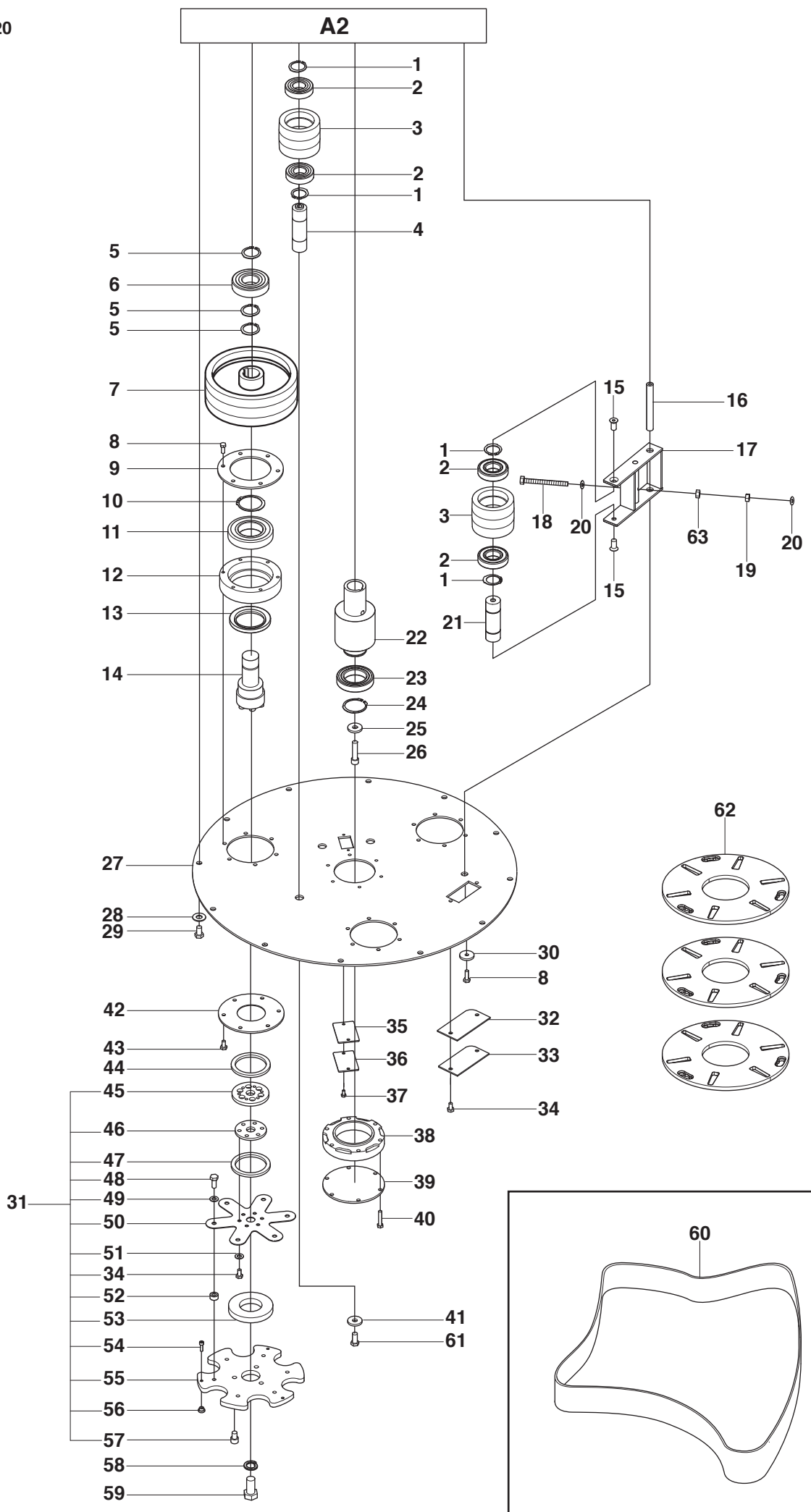
Peças sobresselente



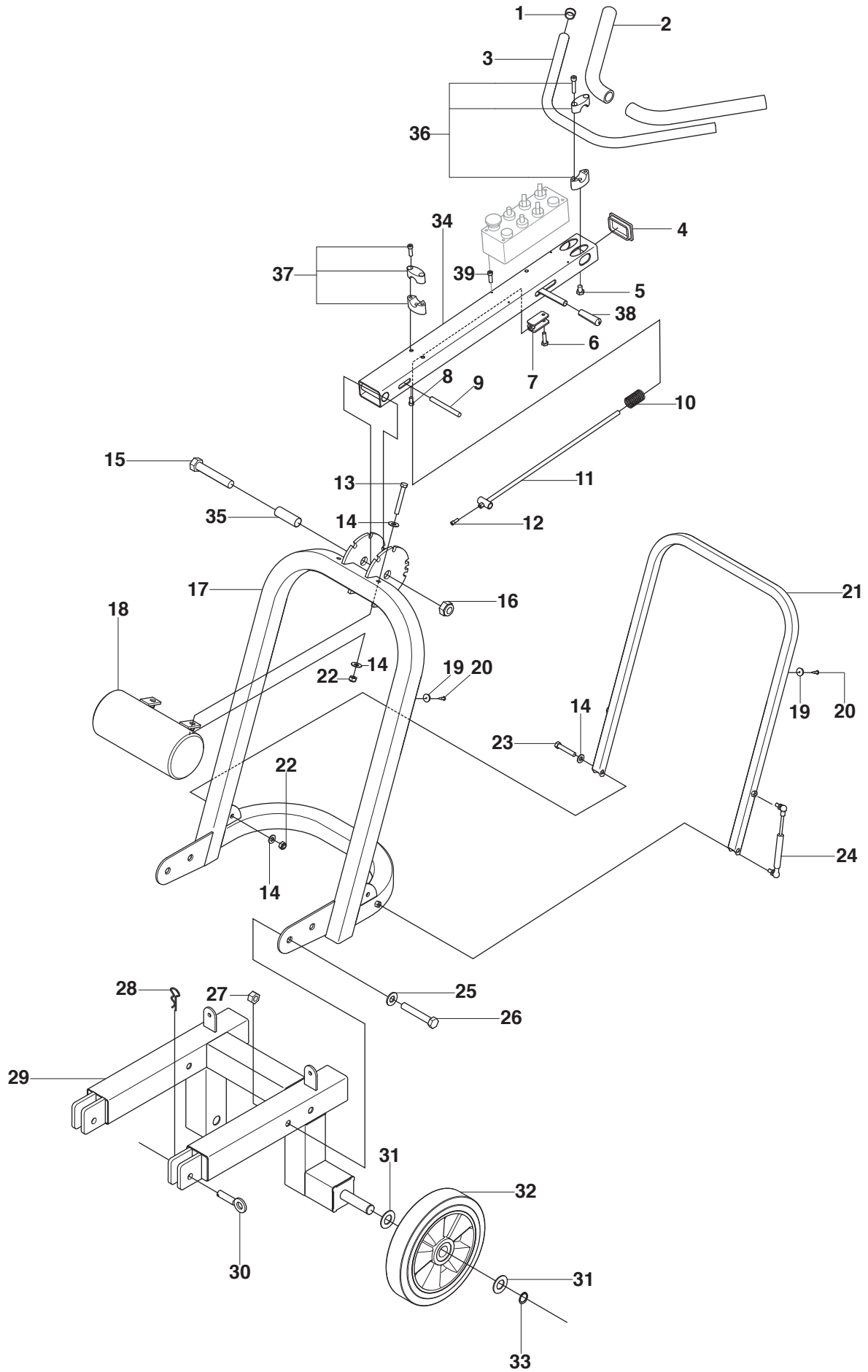
Position	Article	Description	Quantity	Notes	Kit
1	516 05 68-01	FAN COVER	1		
2	516 05 70-01	FAN	1		
3	516 05 71-01	PIN	1		
4	580 99 99-01	GEAR BOX	1		
5	734 11 63-01	WASHER	10		36
6	735 11 64-01	SPRING WASHER	4		
7	732 25 18-01	NUT	6		36
8	725 24 53-76	SCREW	6		36
9	725 24 91-76	SCREW	4		
10	734 11 72-01	WASHER	12		
11	502 53 81-01	BRACKET	1		
12	725 64 53-51	SCREW	4		
13	502 54 24-01	SPROCKET	1		
14	728 54 51-05	SCREW	2		13
15	725 24 97-71	SCREW	6		
16	502 55 15-01	GEAR BOX BRACKET	1		
17	725 25 02-51	SCREW	2		
18	504 72 63-04	SPACER	11		
19	504 72 63-03	SPACER	4		
20	504 72 90-01	LIFTING LUGS	2		
21	725 25 34-71	SCREW	13		
22	734 11 78-01	WASHER	5		
23	504 72 93-01	PLATE	1		
24	504 72 95-01	WASHER	2		
25	504 72 98-02	EXTRACTION CAMLOCK	1		36
26	732 25 16-01	NUT	3		36
27	522 44 83-01	EXTRACTION MOUNT	1		36
28	724 33 70-51	SCREW	3		
29	516 05 72-01	FAN COVER	1		
30	516 05 73-01	FAN	1		
31	516 05 74-01	PIN	1		
32	723 13 20-51	SCREW	7		
33	502 55 11-01	MOUNTING PLATE	1		
34	516 05 78-02	ADHESIVE SEAL	1		
35	502 53 85-01	VELCRO	1		37
36	522 44 82-01	EXTRACTION PORT ASSY	1		37
37	522 44 81-01	COVER ASSY	1		
38	735 11 73-01	WASHER	4		
39	504 74 83-01	WASHER	8		
40	504 74 73-01	WASHER	2		
41	502 54 86-01	RUBBER SKIRT	1		



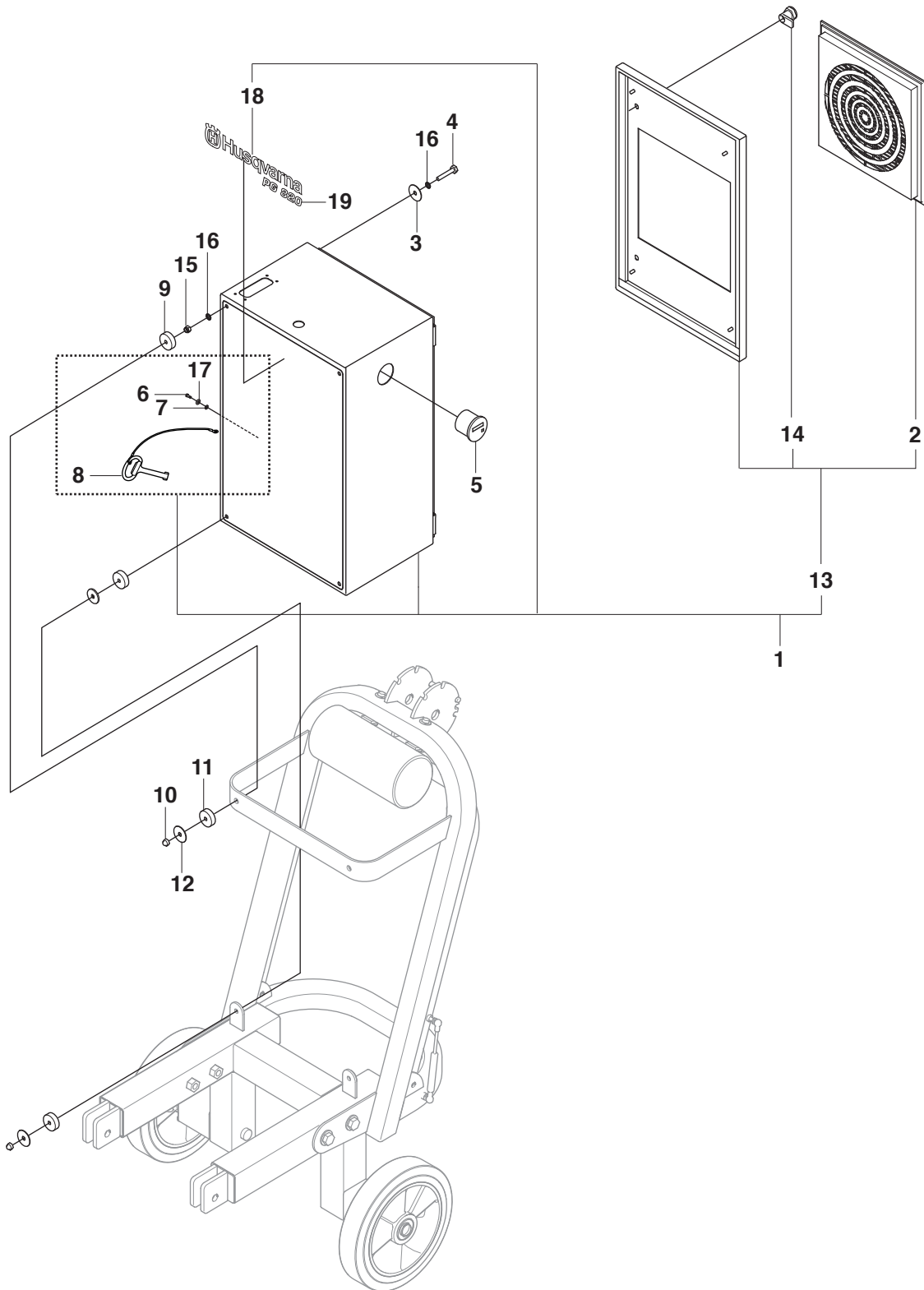
Position	Article	Description	Quantity	Notes	Kit
1	502 53 86-01	CHAIN RING	1		
2	732 25 20-01	NUT	12		
3	504 75 02-01	SCREW	18		
4	502 53 79-01	PLATE	3		
5	725 25 34-71	SCREW	3		
6	504 72 95-01	WASHER	3		
7	725 24 51-76	SCREW	19		
8	725 24 53-76	SCREW	3		
9	543 04 66-47	WASHER	1		
10	725 24 89-76	SCREW	12		
11	502 53 74-01	PLATE	1		
12	502 53 71-01	BEARING HOUSING	3		
13	502 53 99-01	WAVE WASHER	3		
14	504 72 99-01	STRUT	1		
15	734 11 63-01	WASHER	3		
16	732 25 18-01	NUT	3		
17	504 72 82-01	BEARING RETAINER	1		
18	502 53 72-01	BEARING HOUSING	1		
19	502 53 89-01	MAIN BEARINGS	2		
20	504 72 88-01	SPACER RING	1		
21	504 72 81-01	BEARING RETAINER	1		
22	502 53 83-01	RIM	1		
23	502 53 48-01	PLANETARY SEAL KIT	1		
24	502 53 90-01	CIRCLIP	1		



Position	Article	Description	Quantity	Notes	Kit
1	735 31 33-00	CIRCLIP	8		
2	502 53 91-01	BEARING	8		
3	502 53 68-01	IDLER PULLEY	4		
4	502 53 67-01	PULLEY SHAFT	3		
5	735 31 37-00	CIRCLIP	9		
6	502 53 93-01	BEARING	3		
7	502 53 64-01	FLY PULLEY	3		
8	725 24 51-76	SCREW	19		
9	502 53 77-01	PLATE	3		
10	502 53 96-01	CIRCLIP	3		
11	502 53 95-01	BEARING	3		
12	502 53 70-01	BEARING HOUSING	3		
13	502 53 97-01	OIL SEAL	3		
14	502 53 66-01	SHAFT WITH KEY	3		
15	725 64 93-51	SCREW	2		
16	516 05 81-01	SHAFT	1		
17	502 53 82-01	TENSIONER FRAME	1		
18	725 25 15-71	THREAD ROD	1		
19	731 23 20-01	NUT	1		
20	734 11 72-01	WASHER	2		
21	502 53 69-01	SHAFT	1		
22	502 53 65-01	DRIVE PULLEY	1		
23	502 53 87-01	BEARING	1		
24	502 53 88-01	CIRCLIP	1		
25	504 72 63-03	SPACER	1		
26	504 74 88-01	SCREW	1		
27	502 53 75-01	PLATE	1		
28	734 11 78-01	WASHER	12		
29	725 25 32-71	SCREW	12		
30	543 04 66-47	WASHER	1		
31	502 53 40-01	SPRING STEEL SYSTEM	3		
32	516 05 84-01	SEAL	1		
33	504 72 78-01	PLATE	1		
34	725 24 49-76	SCREW	20		
35	516 05 85-01	SEAL	1		
36	504 72 79-01	PLATE	1		
37	725 23 66-71	SCREW	2		
38	502 53 73-01	BEARING HOUSING	1		
39	502 53 78-01	PLATE	1		
40	725 24 60-81	SCREW	6		
41	504 72 95-01	WASHER	3		
42	504 72 80-01	SEAL	3		
43	725 24 53-76	SCREW	18		
44	502 53 98-01	SEAL	3		
45	502 53 40-06	HUB	3		31
46	502 53 40-04	PLATE	3		31
47	502 53 40-05	RUBBER RING	3		31
48	725 24 93-76	SCREW	18		31
49	734 11 72-01	WASHER	18		31
50	502 53 42-01	SPRING	3		31
51	734 11 63-01	WASHER	18		31
52	502 53 40-14	SPACER	18		31
53	502 53 43-01	SILICONE RING	3		31
54	725 53 70-51	SCREW	9		31
55	502 53 40-02	HEAD PLATE	3		31
56	502 53 44-01	HEAD LOCK	9		31
57	504 74 84-01	SCREW	9		31
58	504 74 96-03	WASHER	3		
59	504 74 89-01	SCREW	3		
60	502 54 23-01	DRIVE BELT	1		
61	725 25 34-71	SCREW	3		
62	502 53 22-01	HOLDER DISC	3		
63	732 25 20-01	LOCK NUT	1		

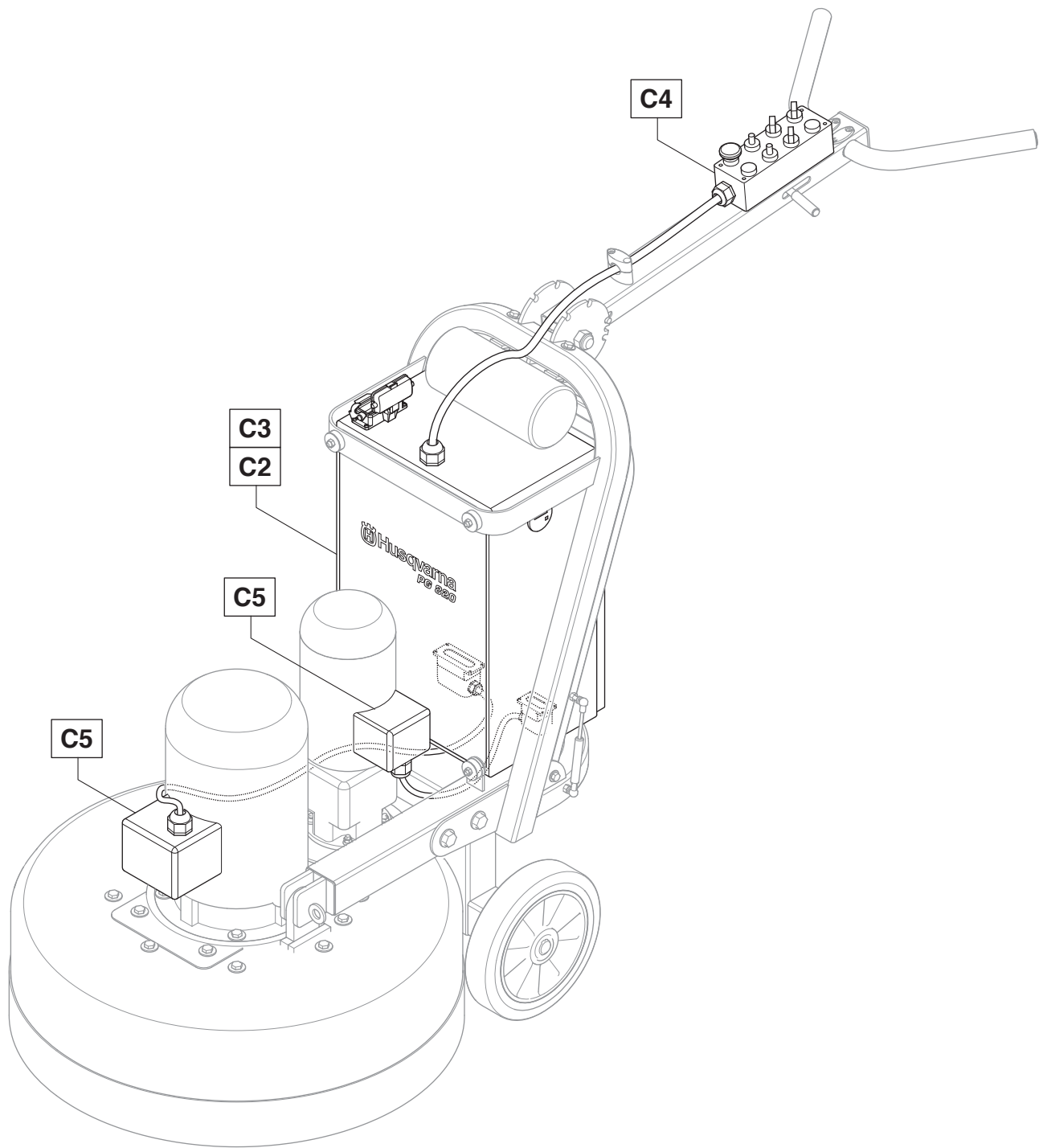


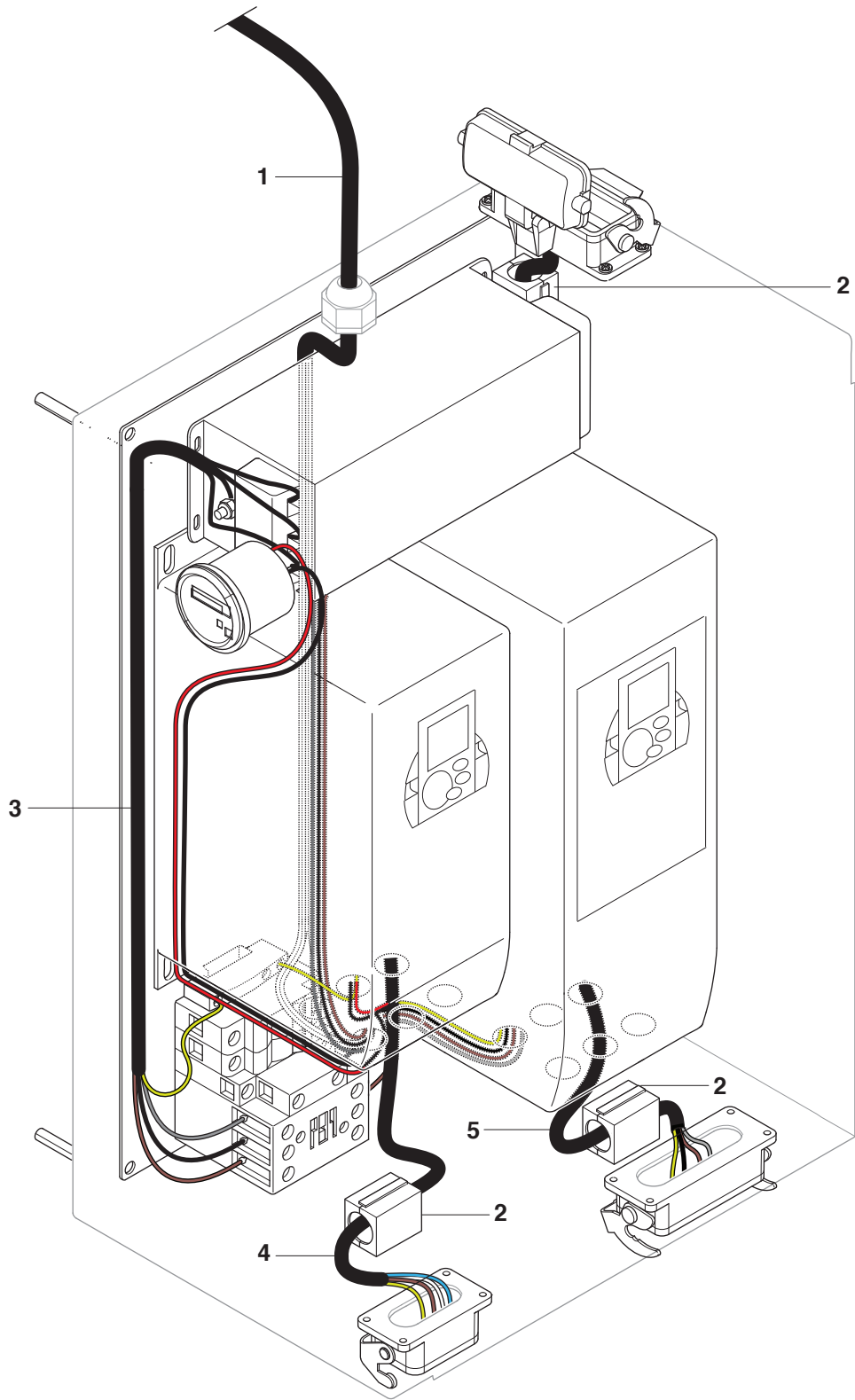
Position	Article	Description	Quantity	Notes	Kit
1	543 04 60-41	END CAP	2		
2	502 54 49-22	HANDLE BAR GRIP	2		
3	502 54 49-20	HANDLE BAR TUBING	1		
4	516 05 90-01	END CAP	1		
5	725 24 89-76	SCREW	2		
6	725 24 55-76	SCREW	1		
7	502 54 49-05	ADJUSTER	1		
8	725 54 45-01	SCREW	2		
9	516 05 93-01	PIN	1		
10	502 54 49-27	SPRING	1		
11	516 05 95-01	ROD	1		
12	724 13 64-51	SCREW	1		
13	725 25 07-51	BOLT	2		
14	734 11 72-01	WASHER	8		
15	504 75 07-01	BOLT	1		
16	504 75 06-01	NUT	1		
17	502 54 47-01	UPPER CHASSIS	1		
18	504 73 04-01	WEIGHT	1		
19	516 05 96-01	RUBBER STOPS	4		
20	521 88 65-01	SCREW	4		
21	502 54 47-07	KICKER BAR	1		
22	732 25 20-01	NUT	4		
23	725 25 02-51	BOLT	2		
24	502 54 47-11	STRUT	2		
25	734 11 86-01	WASHER	4		
26	504 75 13-01	BOLT	4		
27	731 23 24-01	NUT	2		
28	721 68 02-51	R-CLIP	2		
29	502 54 48-01	LOWER CHASSIS	1		
30	504 72 97-01	PIN	2		
31	504 75 14-01	WASHER	4		
32	502 54 50-01	WHEEL	2		
33	735 31 26-00	CIRCLIP	2		
34	502 54 49-02	HANDLE BAR WITH LEVER	1		
35	516 05 97-01	HINGE BUSH	1		
36	502 54 49-25	TUBING MOUNTS	2		
37	502 54 49-26	CONTROL CABLE MOUNTS	1		
38	502 54 49-23	RUBBER COVER	1		
39	504 75 20-01	SCREW	4		



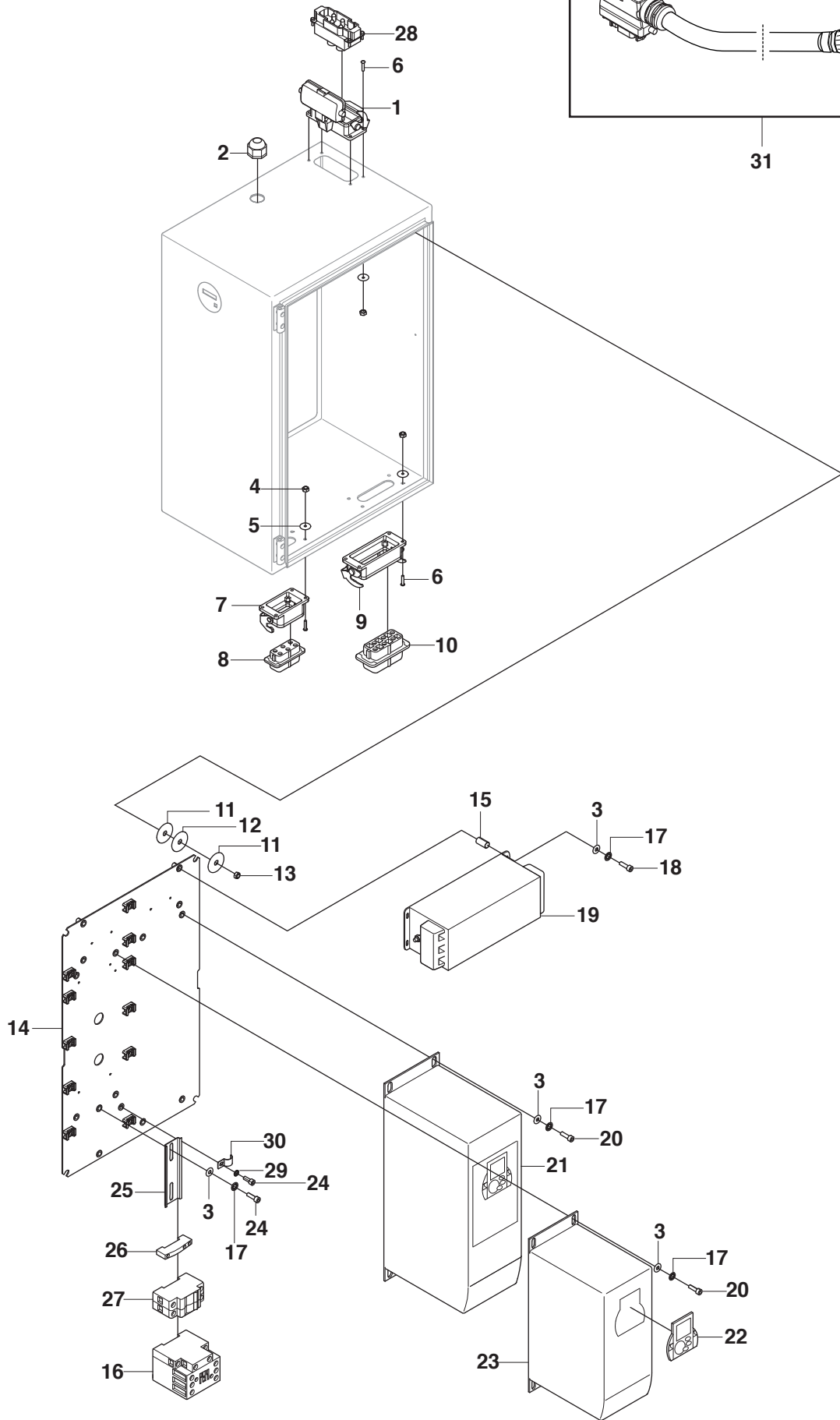
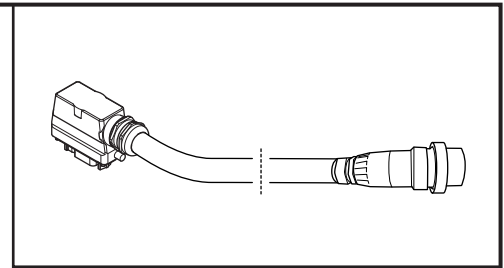
Position	Article	Description	Quantity	Notes	Kit
1a	574 44 08-01	E-BOX KIT	1		1, 13
1b	577 20 61-01	E-BOX KIT	1	JP	1, 13
1c	575 44 08-02	E-BOX KIT	1	UL	
2	502 54 41-01	VENT KIT	1		
3	504 74 73-01	WASHER	4		
4	725 24 61-71	SCREW	4		
5a	504 74 13-01	HOUR METER	1		
5b	580 88 17-01	HOUR METER	1	UL	
6	541 40 51-78	SCREW	1		
7	734 11 52-01	WASHER	1		
8	574 44 11-01	KEY	1		
9	502 53 39-01	SILICON SPRING	4		
10	543 04 47-66	NUT	4		
11	515 98 41-01	SILICONE WASHER	4		
12	521 88 67-01	WASHER	4		
13	574 44 10-01	E-BOX DOOR KIT	1		1
14	516 05 98-01	LOCK	2		1, 13
15	732 25 18-01	LOCK NUT	4		
16	735 21 64-01	TOOTH WASHER	8		
17	735 11 53-01	LOCK WASHER	1		

C1 PG820



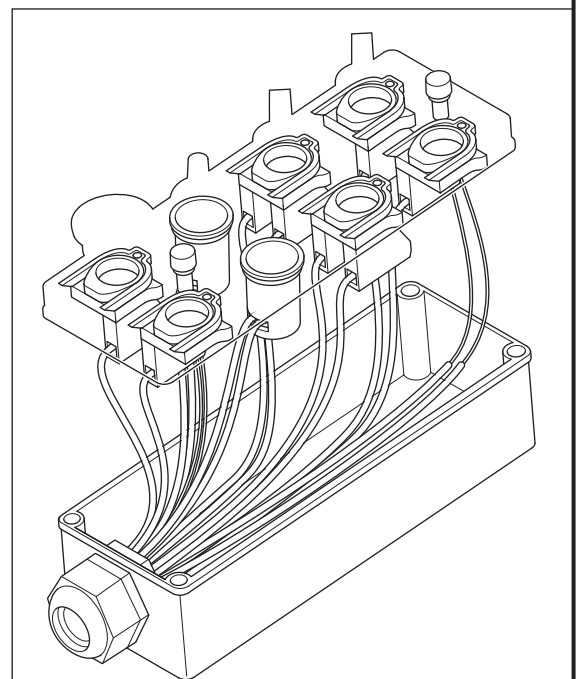
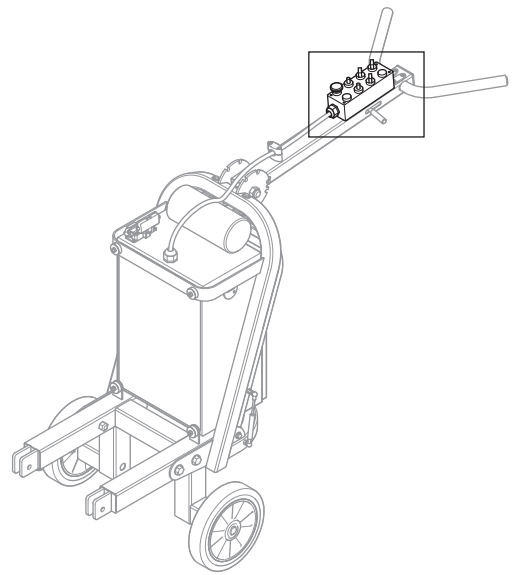
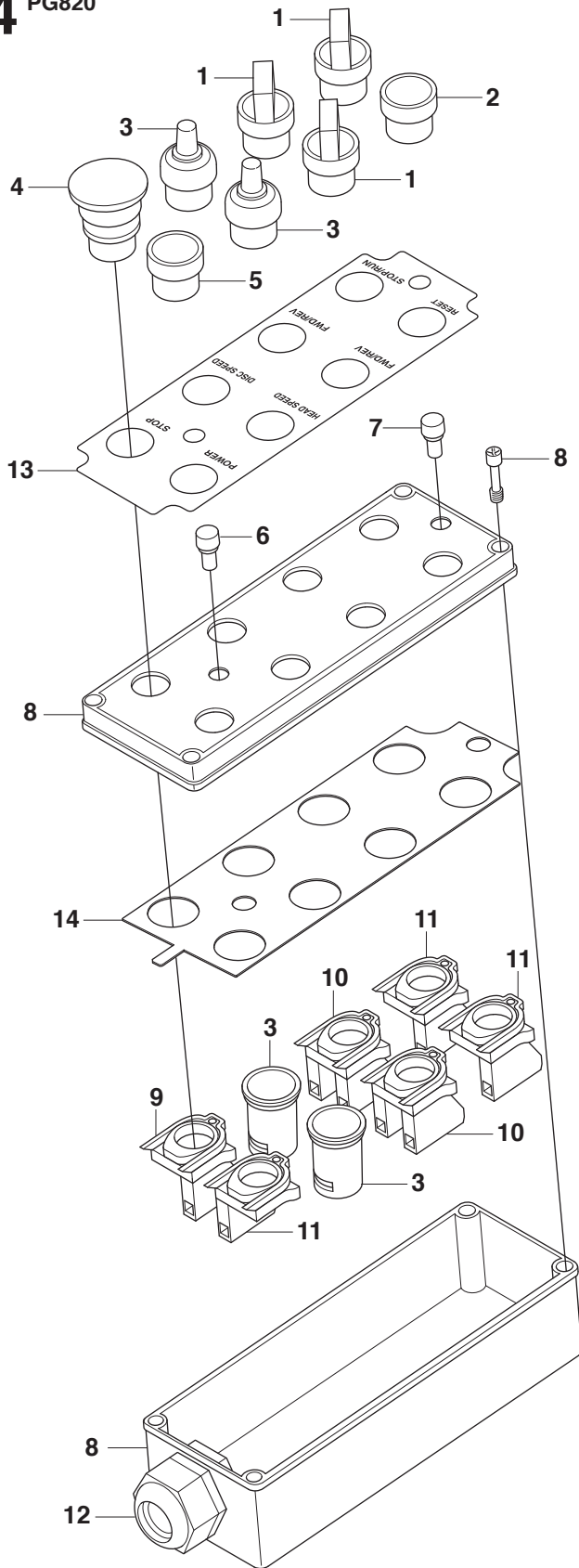


Position	Article	Description	Quantity	Notes	Kit
1a	502 54 42-01	CONTROL PANEL LOOM	1		
1b	577 20 62-01	CONTROL PANEL LOOM	1	JP	
1c	581 11 09-01	CONTROL PANEL LOOM	1	UL	
2	504 71 72-01	FERRITE	3		
3a	516 05 77-01	CONNECTION CABLE	1		
3b	516 05 77-02	CONNECTION CABLE	1	UL	
3c	577 20 63-01	CONNECTION CABLE	1	JP	
4a	516 05 76-01	CABLE	1		
4b	516 05 76-02	CABLE	1	UL	
5	516 05 75-01	CABLE	1		
5b	516 05 75-02	CABLE	1	UL	
5c	577 20 65-01	CABLE	1	JP	



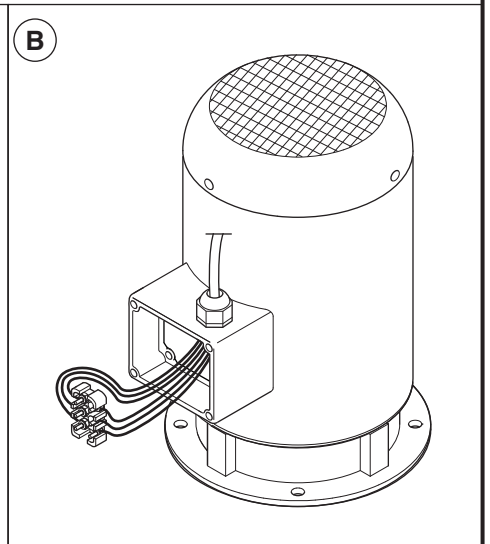
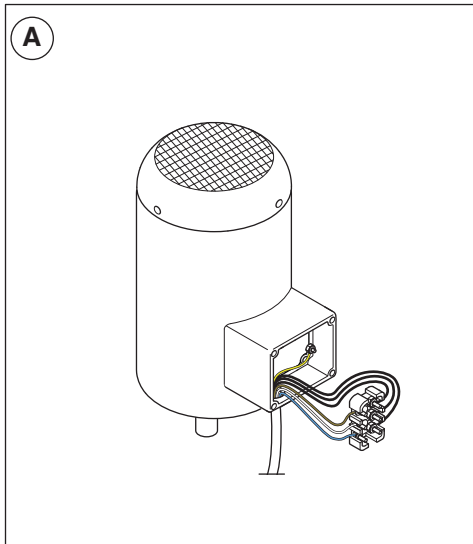
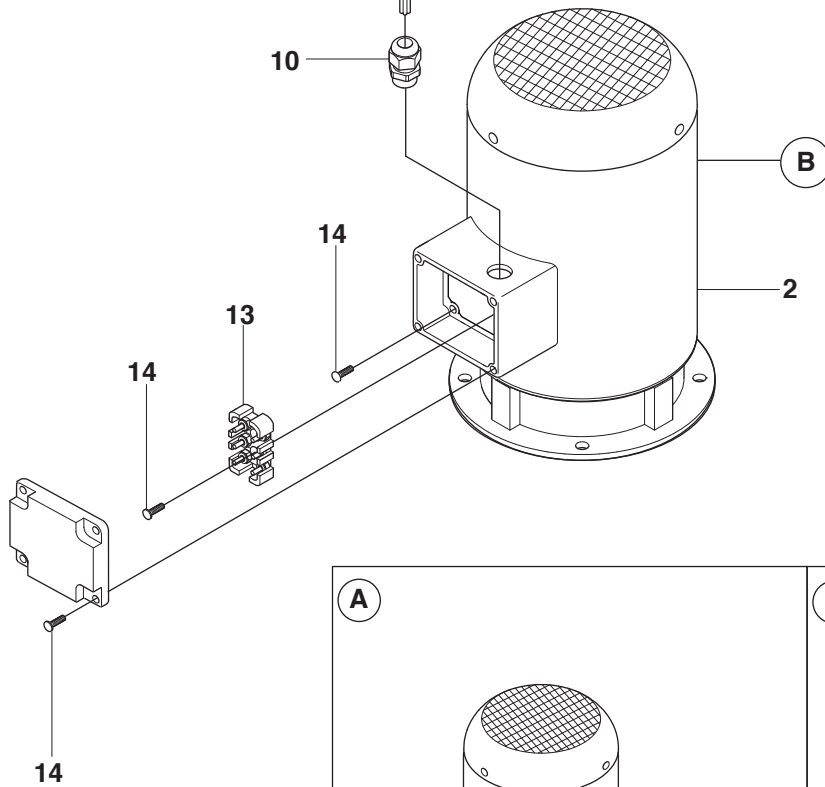
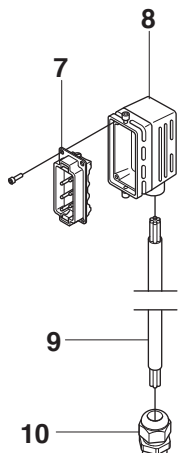
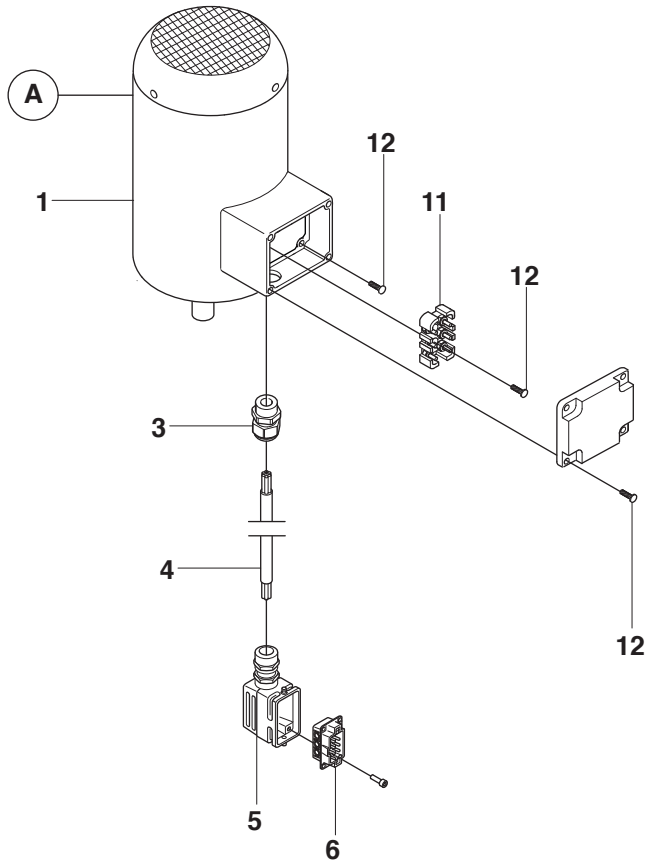
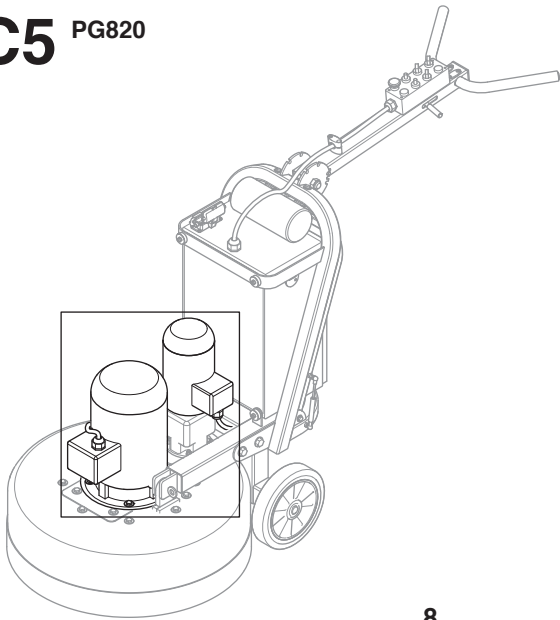
Position	Article	Description	Quantity	Notes	Kit
1	516 06 06-02	HOUSING	1		
2	502 54 39-01	GLAND	2		
3	734 11 54-41	WASHER	14 (10,UL)		
4	732 25 12-01	NUT	12		
5	734 11 36-01	WASHER	12		
6	724 12 93-51	SCREW	12		
7	516 06 04-01	HOUSING	1		
8	516 06 05-01	FEMALE PLUG	1		
9	516 06 06-01	HOUSING	1		
10a	516 06 07-01	FEMALE PLUG	1		
10b	504 76 26-01	FEMALE PLUG	1	JP	
11	521 88 67-01	WASHER	8		
12	516 06 01-01	RUBBER WASHER	8		
13	732 25 18-01	NUT	4		
14a	574 44 12-01	PLATE KIT ASSY	1		
14b	577 20 66-01	PLATE KIT ASSY	1	JP	
15	504 75 81-01	SPACER	4		
16a	502 54 36-01	CONTACTOR BLOCKS	1	NOT UL	
16b	581 03 18-01	CONTACTOR BLOCKS	1	JP	
17	735 11 53-01	WASHER	14 (10,UL)		
18	725 53 80-01	SCREW	4	NOT UL	
19	504 71 71-01	FILTER	1		
20	725 53 70-51	SCREW	8		
21a	502 54 25-01	FREQUENCY INVERTER	1		
21b	576 93 53-01	FREQUENCY INVERTER	1	JP	
22a	516 06 10-01	NXL DISPLAY PANEL	2		
22b	505 46 40-01	NXS DISPLAY PANEL	2		
23a	502 54 26-01	FREQUENCY INVERTER	1		
23b	576 93 54-01	FREQUENCY INVERTER	1	JP	
24	725 53 68-01	SCREW	3		
25	516 06 11-01	RAIL	1		
26	502 54 38-01	EARTH TERMINALS	1		
27a	502 54 37-01	CIRCUIT BREAKER	1		
27b	578 35 05-01	CIRCUIT BREAKER	1	UL	
28	504 76 25-01	CONNECTOR	1		
29	735 21 53-01	TOOTH WASHER	1		
30	504 75 84-01	CLAMP	1		
31a	574 44 13-01	CABLE KIT	1	EU	
31b	574 44 13-02	CABLE KIT	1	AU	
31c	574 44 13-03	CABLE KIT	1	US	
31d	574 44 13-04	CABLE KIT	1	JP	

C4 PG820



Position	Article	Description	Quantity	Notes	Kit
1	504 73 86-01	SWITCH	3		
2	504 73 88-01	RESET BUTTON	1		
3	502 54 29-01	POTENTIOMETER	2		
4	504 73 94-01	EMERGENCY STOP BUTTON	1		
5	504 73 90-01	POWER BUTTON	1		
6a	504 73 97-01	RED LIGHT INDICATOR	1		
6b	580 88 16-02	RED LIGHT INDICATOR	1	UL	
7a	504 73 96-01	GREEN LIGHT INDICATOR	1		
7b	580 88 16-01	GREEN LIGHT INDICATOR	1	UL	
8	502 54 46-01	CONTROL PANEL	1		
9	504 73 95-01	BUTTON BODY	1		
10	504 73 87-01	SWITCH BODY	2		
11	504 73 89-01	BUTTON BODY	3		
12	502 54 39-01	GLAND	1		
13	502 54 33-01	FACE PLATE	1		
14	504 75 82-01	EARTHING PLATE	1		

C5 PG820



Position	Article	Description	Quantity	Notes	Kit
1a	502 53 57-01	PIANETARY MOTOR	1		
1b	576 93 32-01	PIANETARY MOTOR	1	JP	
2a	502 53 52-01	MAIN MOTOR	1		
2b	580 68 69-01	MAIN MOTOR	1	JP	
3	516 06 12-01	GLAND	1		
4a	504 74 03-01	CABLE	1		5-6
4b	504 74 03-02	CABLE	1	UL	5-6
5	516 06 13-01	HOOD	1		
6	516 06 14-01	MALE PLUG	1		
7a	516 06 15-01	MALE PLUG	1		
7b	504 76 25-01	MALE PLUG	1	JP	
8	516 06 16-01	HOOD	1		
9a	516 06 17-01	CABLE	1		7-8
9b	516 06 17-02	CABLE	1	UL	7-8
9c	577 20 67-01	CABLE	1	JP	
10a	516 06 18-01	GLAND	1		
10b	502 54 39-01	GLAND	1	JP	
11	516 06 19-01	TERMINAL BLOCK	1		
12	723 13 27-51	SCREW	9		
13	516 06 20-01	TERMINAL BLOCK	1		
14	724 13 68-51	SCREW	9		